

Wastemanagement & Route optimisation



Bins are often emptied when they are not yet full.

This is insufficient.

Many expensive work hours are lost in the process.

A lot of fuel is wasted too,
which is expensive and bad for the environment.



When bins are not emptied out in time,
people tend to get frustrated.

They throw their garbage close to the bin, or on the ground.

Apart from the looks, littering has a
very negative environmental impact.

It's very difficult to collect data on pollution,
littering or bin usage in certain areas.
With a sensor it's easy to act in a proactive way.



Measuring Fill Level

We accurately measure the fill level of garbage bins of different shapes and sizes and report them to the backend over varying communication technologies of Sigfox, NB IoT and LoRa.

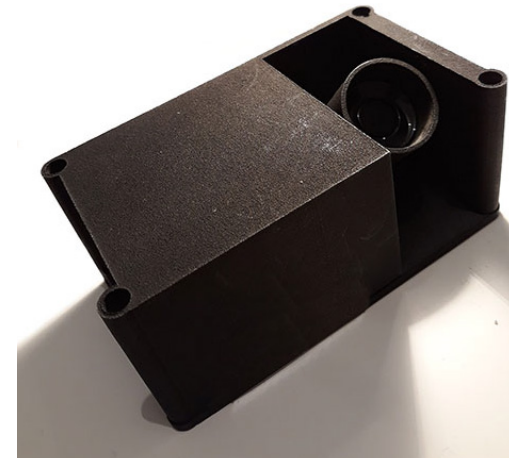
Advanced Data Analytics for Future Services

The backend allows for advanced data analytics to provide bi-annual reporting to municipalities and partners to perform proper urban planning.

Upgraded Route Optimizations

Adaptive Route Learning models are used to create a powerful routing system that meets the needs of local municipal drivers optimized to their garbage collection routes, which are not addressed today by other off the shelf routing tools.

By optimising the route you can save up to **35%** on labour and fuel costs



How We Are Different?

- 40-60% smaller than other sensors
- Can be top or side-mounted
- Adjustable sensor beams
- Save up to 35% on labor and fuel cost by implementing our intelligent and sustainable waste management system that saves energy and resources

Device dimensions

Size: 67 mm (L) x 60 mm (B) x 45 mm (H)

Features

Fill Level detection in any bins
Fire Detection Alert

Supported IoT Networks

LoRaWAN

SigFox

Narrowband IoT

All wireless technologies support a range between 1,5 to 5 km radius, depending on the urban density.

Power

Battery: non-rechargeable lithium battery

Battery Life: 5 - 7 years of uninterrupted service

Environmental

Casing: IP65

Operational temperature range: -20 to +60 degrees C

Sensobility by VVSnv

SENSOR DRIVEN WASTE AND ROADSIGN MANAGEMENT



VVS nv
Veldstraat 107 - 3500 Hasselt - Belgium
www.vvsnv.be - info@vvsnv.be